

**MAIN STREET
MORNINGTON**

Heritage Walk



Main Street Mornington Picture Tour

to be viewed in conjunction with the audio tour

<http://morningtondistricthistory.org.au/mornington-mainstreet-audio-tour/>

MAIN STREET MORNINGTON

Heritage Walk



Main Street, Mornington from Esplanade

**MAIN STREET
MORNINGTON**

Heritage Walk



Bird's eye view to north

**MAIN STREET
MORNINGTON**

Heritage Walk



Towards Grand Hotel c.1900

**MAIN STREET
MORNINGTON**

Heritage Walk



Train just arrived c.1920

MAIN STREET
MORNINGTON

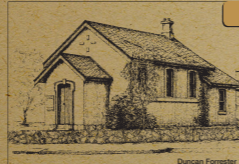
Heritage Walk



c.1910

Heritage Walk

1



Duncan Forrester

COURT HOUSE & LOCK UP

Corner of Main Street and Esplanade

Built by William Vaughan & Co in 1860 and extended in 1862, this is the oldest public building in Mornington and initially served the entire Peninsula. It remained the Mornington Court of Petty Sessions until 1988.

From the earliest years, cases typically involved drunkenness, larceny and by-laws and later motoring offences.

The Lock-Up served as a jail from 1862 until 1882. Subsequently it was used principally for holding people in custody overnight or during court sessions.

SNAPPER POINT.
NOTICE is hereby given that a Court of Petty Sessions will be held at the Court House, Snapper Point, every Saturday, at the hour of Twelve o'clock, as soon, commencing on the 19th instant.
(By Order)
WILLIAM ARMSTRONG,
Clerk of Petty Sessions.
Court House,
Snapper Point, 16th January, 1911.
No. 26-2-18987 25, 1911-12.

Gazette notice

Mornington & District Historical Society

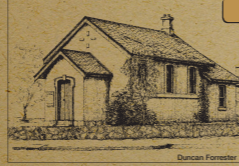
THE WEEKLY TIMES, SATURDAY, FEBRUARY 24, 1922.

Resort on the South East Shore of Port Phillip Bay, With Sandy Beaches,



The Main Street

1922



Duncan Forrester

COURT HOUSE & LOCK UP

Corner of Main Street and Esplanade

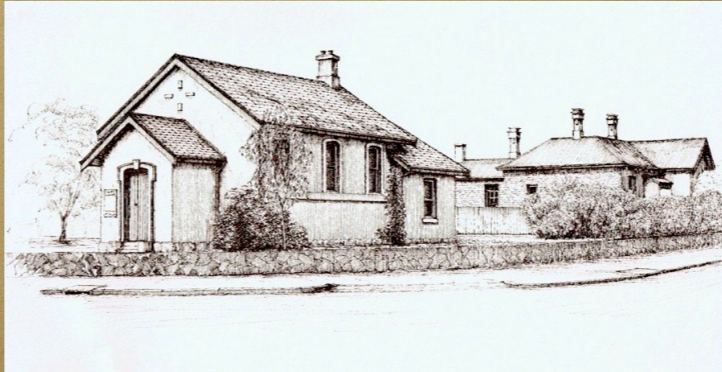
Built by William Vaughan & Co in 1860 and extended in 1862, this is the oldest public building in Mornington and initially served the entire Peninsula. It remained the Mornington Court of Petty Sessions until 1988.

From the earliest years, cases typically involved drunkenness, larceny and by-laws and later motoring offences.

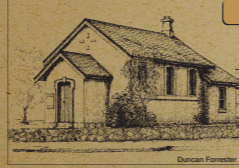
The Lock-Up served as a jail from 1862 until 1882. Subsequently it was used principally for holding people in custody overnight or during court sessions.

SNAPPER POINT.
NOTICE is hereby given that a Court of Petty Sessions will be held at the Court House, Snapper Point, every Saturday, at the hour of Twelve o'clock, as soon, commencing on the 19th instant.
(By Order)
WILLIAM ARMSTRONG,
Clerk of Petty Sessions.
Court House,
Snapper Point, 16th January, 1861.
No. 26—LAWRY'S GAZETTE.

Gazette notice



Courthouse and Police Station



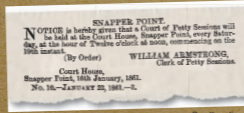
COURT HOUSE & LOCK UP

Corner of Main Street and Esplanade

Built by William Vaughan & Co in 1860 and extended in 1862, this is the oldest public building in Mornington and initially served the entire Peninsula. It remained the Mornington Court of Petty Sessions until 1988.

From the earliest years, cases typically involved drunkenness, larceny and by-laws and later motoring offences.

The Lock-Up served as a jail from 1862 until 1882. Subsequently it was used principally for holding people in custody overnight or during court sessions.



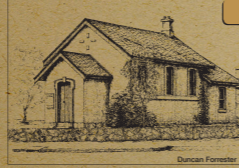
Mornington & District Historical Society



J. BLACKER

Mornington Grain and Produce Store

J. Blacker - see also Plaque 11



COURT HOUSE & LOCK UP

Corner of Main Street and Esplanade

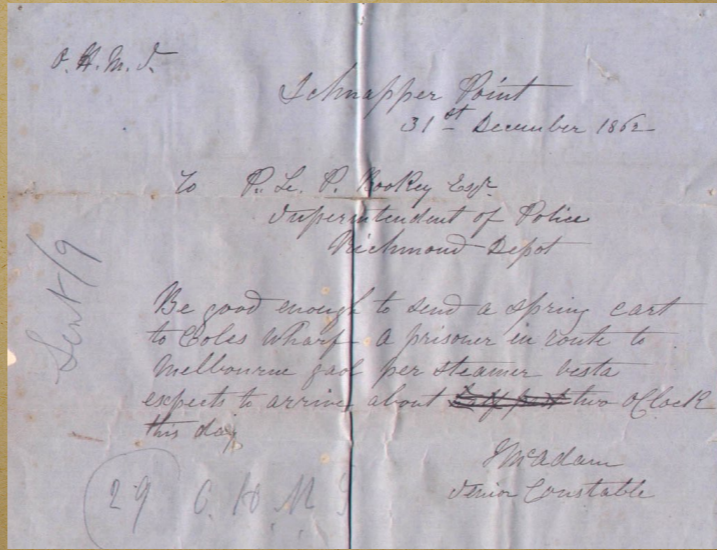
Built by William Vaughan & Co in 1860 and extended in 1862, this is the oldest public building in Mornington and initially served the entire Peninsula. It remained the Mornington Court of Petty Sessions until 1988.

From the earliest years, cases typically involved drunkenness, larceny and by-laws and later motoring offences.

The Lock-Up served as a jail from 1862 until 1882. Subsequently it was used principally for holding people in custody overnight or during court sessions.

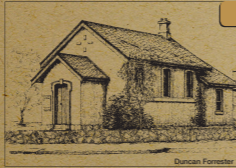
SNAPPER POINT.
NOTICE is hereby given that a Court of Petty Sessions will be held at the Court House, Snapper Point, every Saturday, at the hour of Twelve o'clock, as soon, commencing on the 19th instant.
(By Order)
WILLIAM ARMSTRONG,
Clerk of Petty Sessions.
Court House,
Snapper Point, 14th January, 1862.
No. 26-2-1862, 1862-3.

Gazette notice



Telegram sent 1862

Heritage Walk



Duncan Forrester

COURT HOUSE & LOCK UP

Corner of Main Street and Esplanade

Built by William Vaughan & Co in 1860 and extended in 1862, this is the oldest public building in Mornington and initially served the entire Peninsula. It remained the Mornington Court of Petty Sessions until 1988.

From the earliest years, cases typically involved drunkenness, larceny and by-laws and later motoring offences.

The Lock-Up served as a jail from 1862 until 1882. Subsequently it was used principally for holding people in custody overnight or during court sessions.

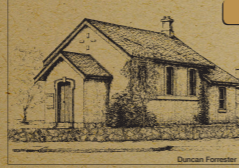
SNAPPER POINT.
NOTICE is hereby given that a Court of Petty Sessions will be held at the Court House, Snapper Point, every Saturday, at the hour of Twelve o'clock, as soon, commencing on the 19th instant.
(By Order)
WILLIAM ARMSTRONG,
Clerk of Petty Sessions.
Court House,
Snapper Point, 16th January, 1911.
No. 26-2-1897 25, 1911-12.

Gazette notice

Mornington & District Historical Society



Chevrolet - 1937 - M.T.S.
Outside Mornington Police Station
J.Purdon 8341 (driver) & H.Parker 8886.



Duncan Forrester

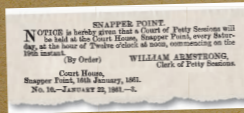
COURT HOUSE & LOCK UP

Corner of Main Street and Esplanade

Built by William Vaughan & Co in 1860 and extended in 1862, this is the oldest public building in Mornington and initially served the entire Peninsula. It remained the Mornington Court of Petty Sessions until 1988.

From the earliest years, cases typically involved drunkenness, larceny and by-laws and later motoring offences.

The Lock-Up served as a jail from 1862 until 1882. Subsequently it was used principally for holding people in custody overnight or during court sessions.



Gazette notice

Mornington & District Historical Society



Mr & Mrs Bieri outside their shop in Mornington.

MORNINGTON CAFE,
 "PARKSIDE," MAIN STREET, MORNINGTON.

Fredk. BIERI,
 Pastrycook, Caterer, Confectioner.

Dinner, Afternoon Tea, Supper, Light Refreshments.
 French and English Pastry and Cakes.

HOT MEAT PIES! Coffee Suppers.
 Private Dinners, Wedding Parties, Socials, etc., catered for.
 Superior Accommodation for Visitors.

THE NEW UP-TO-DATE DINING ROOM IS NOW OPENED
 BUCHANAN'S AND CADBURY'S BEST ASSORTED CHOCOLATES.

Bieri's cafe

Main St Mornington

2



MORNINGTON COFFEE PALACE

29-30 Main Street

Built in the late 1800s, it was owned by Mr and Mrs Robertson and run as a cafe and small boarding house. At one stage, it was called Clifton House. By the start of the First World War it had been converted into the town's newsagency, carrying stationery, books, fancy goods, toys, cottons & silks. It also became an agency for gramophone records in the 1920s.

The Wood family ran it together with a subscription library until the Penders took over in 1924. After the newsagency moved further up Main Street in the early 1950s the building continued to house various retail businesses.

The upper storey windows and parapet are original but the ground floor façade has been altered over time.

Mornington Chamber of Commerce

FOR THE NEW YEAR
We are prepared, for 1914
To do our best to give you the best
of all things a **WELL DRESSED SUIT**
at a **RECORD** of 20 or 25%
WOOD BROS.
Mornington Ambulance News Agency



**When it was a funeral parlor.
Note the picket fence of the school**

Main St Mornington

2



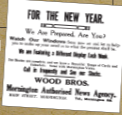
MORNINGTON COFFEE PALACE

29-30 Main Street

Built in the late 1800s, it was owned by Mr and Mrs Robertson and run as a cafe and small boarding house. At one stage, it was called Clifton House. By the start of the First World War it had been converted into the town's newsagency, carrying stationery, books, fancy goods, toys, cottons & silks. It also became an agency for gramophone records in the 1920s.

The Wood family ran it together with a subscription library until the Penders took over in 1924. After the newsagency moved further up Main Street in the early 1950s the building continued to house various retail businesses.

The upper storey windows and parapet are original but the ground floor façade has been altered over time.



THE ROSE SERIES P. 2170

MAIN STREET, MORNINGTON, VIC.

Mornington Chamber of Commerce

Coffee palace on left when it was newsagency

Main St Mornington

2

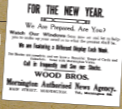


MORNINGTON COFFEE PALACE

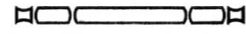
29-30 Main Street

Built in the late 1800s, it was owned by Mr and Mrs Robertson and run as a cafe and small boarding house. At one stage, it was called Cliffons House. By the start of the First World War it had been converted into the town's newsagency, carrying stationery, books, fancy goods, toys, cottons & silks. It also became an agency for gramophone records in the 1920s. The Wood family ran it together with a subscription library until the Penders took over in 1924. After the newsagency moved further up Main Street in the early 1950s the building continued to house various retail businesses. The upper storey windows and parapet are original but the ground floor façade has been altered over time.

Mornington Chamber of Commerce



FOR THE NEW YEAR.



We Are Prepared, Are You?

Watch Our Windows from now on and let us help you to make up your mind as to what the present shall be.

We are Featuring a Different Display Each Week.

Our Stocks are complete, and we have a Beautiful Range of Cards and Calendars. Some with Mornington Views.

Call in frequently and See our Stocks.

WOOD BROS.

Mornington Authorised News Agency.

MAIN STREET, MORNINGTON. Tel., Mornington 52.

A. M. WOOD

-FOR-

Stationery and Fancy Goods

School Requisites. Post Cards. News Agent.

Daily, Weekly and Local Papers. Circulating Library.

TOYS, COTTONS & SILKS. Magazines and Fashion Journals.

Main St Mornington

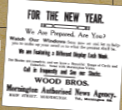
2



MORNINGTON COFFEE PALACE

29-30 Main Street

Built in the late 1800s, it was owned by Mr and Mrs Robertson and run as a cafe and small boarding house. At one stage, it was called Clifton House. By the start of the First World War it had been converted into the town's newsagency, carrying stationery, books, fancy goods, toys, cottons & silks. It also became an agency for gramophone records in the 1920s. The Wood family ran it together with a subscription library until the Penders took over in 1924. After the newsagency moved further up Main Street in the early 1950s the building continued to house various retail businesses. The upper storey windows and parapet are original but the ground floor façade has been altered over time.



Mornington Chamber of Commerce



JUST OPENED:

Splendid range Japanese Crepes, Tussore Silks, Risalco Cloths, Prints, Ready-to-wear Hats, Lace Collars, Embroideries and Insertions.

CHILDREN'S FROCKS. DRESSES ALL SIZES.

LATEST SELECTION MEN'S SUITINGS TO MEASURE. FIT AND STYLE GUARANTEED.

Are you requiring Floorcloths or Linoleums?

Now is the time to purchase - at Old Prices.

THESE GOODS MUST ADVANCE IN PRICE WHEN PRESENT STOCKS ARE USED UP.

DICKINSON BROS. Main-street, MORNINGTON.

Continuing up the street. . .

Main St Mornington

2



Main St with Coffee Palace in 1930s

MORNINGTON COFFEE PALACE

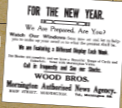
29-30 Main Street

Built in the late 1800s, it was owned by Mr and Mrs Robertson and run as a cafe and small boarding house. At one stage, it was called Cliffons House. By the start of the First World War it had been converted into the town's newsagency, carrying stationery, books, fancy goods, toys, cottons & silks. It also became an agency for gramophone records in the 1920s.

The Wood family ran it together with a subscription library until the Penders took over in 1924. After the newsagency moved further up Main Street in the early 1950s the building continued to house various retail businesses.

The upper storey windows and parapet are original but the ground floor façade has been altered over time.

Mornington Chamber of Commerce



Visitors to Mornington will find a Trip to

DICKINSON BROS. MAIN STREET

Both a Pleasure and Profit

COMPLETE HOUSE FURNISHERS

HOUSEHOLD IRONMONGERY CROCKERY

GLASSWARE DRAPERY

Newest Goods are always arriving in LADIES' AND CHILDREN'S WEAR and MEN'S APPAREL. BOOTS AND SHOES CAMPING AND SEASIDE REQUISITES

Inspect our SPECIAL VALUE in CANADIAN BATHING COSTUMES

... and also

COMMERCIAL BANK

3

62 Main Street

Designed in the Italian Renaissance style by Melbourne Architect George Jobbins. It was built c1890, for the Commercial Bank of Australasia, as revealed by the signage above the entrance.

For some years it served as a boarding house before being taken over by the Colonial Bank of Australia around 1910 when they moved from their inadequate premises opposite.

The building has been modified over the years and no longer has its original parapet or tower windows. The upper floor was the Manager's residence until 1970. The high-ceilinged ground floor was the banking chamber.

It remained a branch of the Colonial Bank of Australia until a merger with the National Bank of Australasia in

1918. It was the Mornington branch of the National Bank until 1986 when this was moved to 107 Main Street.



Colonial Bank c1918



The Bank on the right

COMMERCIAL BANK

3

62 Main Street

Designed in the Italian Renaissance style by Melbourne Architect George Jobbins. It was built c1890, for the Commercial Bank of Australasia, as revealed by the signage above the entrance.



Colonial Bank c1919

For some years it served as a boarding house before being taken over by the Colonial Bank of Australia around 1910 when they moved from their inadequate premises opposite.

The building has been modified over the years and no longer has its original parapet or tower windows. The upper floor was the Manager's residence until 1970. The high-ceilinged ground floor was the banking chamber.

It remained a branch of the Colonial Bank of Australia until a merger with the National Bank of Australasia in

1918. It was the Mornington branch of the National Bank until 1986 when this was moved to 107 Main Street.

**THE
Colonial Bank of Australasia
LIMITED,
MORNINGTON.**

IN connection with this branch DROMANA will be visited on
TUESDAY & THURSDAY
in each week for the transaction of
Banking Business of every description.
J. L. FAIRBAIRN,
Manager.

**THE
Colonial Bank of Australasia
LIMITED,
MORNINGTON.**

IN connection with this branch DROMANA will be visited on
TUESDAY & THURSDAY
in each week for the transaction of
Banking Business of every description.
J. L. FAIRBAIRN,
Manager.

Main St Mornington

4



Mornington Railway Station

BLAKE STREET & CORNER

Blake Street connected the Railway Station to Main Street when the railway came to Mornington in 1889. From the early 1900s there was a store on the corner of Railway Grove offering real estate and cab services. Later the Messrs Beattie offered refreshments and a library. A Railway waiting room for ladies was also in Blake Street. On the opposite side was a solicitor's office, a printer and a bakehouse which supplied the cake shop on Main Street. There was a bulk goods and loading area for the grocery store on the corner of Main Street.

W. T. SACH
BLAKE STREET, MORNINGTON
REAL ESTATE AGENT

Leading Library
Messrs Beattie
All the Latest Books
Try at Their Window



Corner Real Estate No. 64

Mornington Chamber of Commerce



Passengers leaving the station

Main St Mornington

4

Mornington Railway Station



BLAKE STREET & CORNER

Blake Street connected the Railway Station to Main Street when the railway came to Mornington in 1889. From the early 1900s there was a store on the corner of Railway Grove offering real estate and cab services. Later the Messes Beattie offered refreshments and a library. A Railway waiting room for ladies was also in Blake Street. On the opposite side was a solicitor's office, a greeter and a bakehouse which supplied the cake shop on Main Street. There was a bulk goods and loading area for the grocery store on the corner of Main Street.

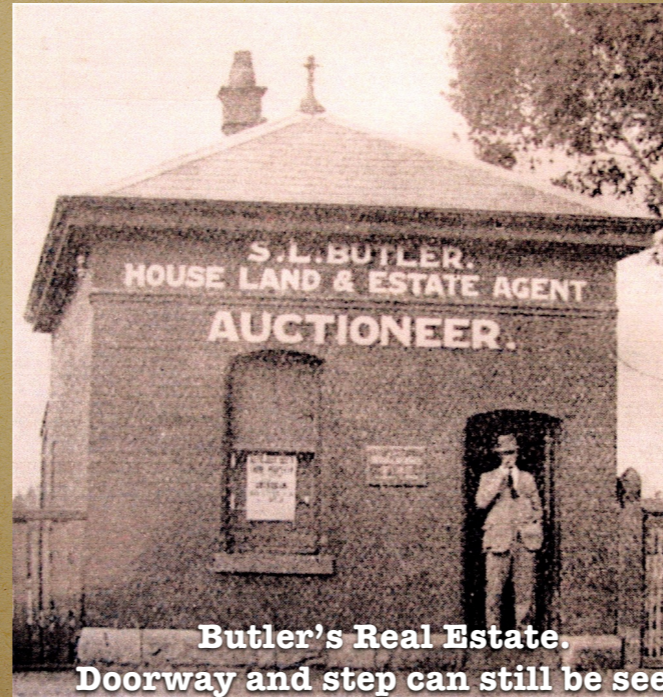
W. T. SACH
BLAKE STREET, MORNINGTON
REAL ESTATE AGENT

On the north side intersecting Main Street the present group of shops was built in 1931/2. Wilson & Livock grocers occupied both corners when they relocated their drapery, haberdashery and apparel departments, operating there until the 1950s. Originally, No. 60 was a stand-alone building dating back to c1900 as an estate agency. The entrance and interior survive intact. The corner shop still has the original pressed metal ceiling under the verandah and a leadlight glass breeze.



Butler Real Estate No. 60

Mornington Chamber of Commerce



Butler's Real Estate.
Doorway and step can still be seen

Main St Mornington

4



Mornington Railway Station

BLAKE STREET & CORNER

Blake Street connected the Railway Station to Main Street when the railway came to Mornington in 1889. From the early 1900s there was a store on the corner of Railway Grove offering real estate and cab services. Later the Messrs Beattie offered optometrists and a library. A Railway waiting room for ladies was also in Blake Street.

On the opposite side was a solicitor's office, a printer and a bakehouse which supplied the cake shop on Main Street. There was a bulk goods and loading area for the grocery store on the corner of Main Street.

On the north side intersecting Main Street the present group of shops was built in 1931/2. Wilson & Livock grocers occupied both corners when they relocated their drapery, haberdashery and apparel departments, operating there until the 1950s. Originally, No. 66 was a stand-alone building dating back to c1900 as an estate agency. The entrance and interior survive intact.

This corner shop still has the original crisscross metal ceiling under the verandah and a leadlight glass frieze.

Mornington Chamber of Commerce

—TERMINUS—
Lending Library
 BLAKE STREET MORNINGTON
Misses Beattie
 WISH to notify the Public that they have opened a LENDING LIBRARY, stocked with—
All The Latest Books
 ANNUAL SUBSCRIPTION, 10/-
Try It This Winter

Why Buy a Watch in the City?
 FEW residents do, judging by the quantity I sell, but why does anyone?
 I've a good selection, a thorough knowledge of the trade, and my prices are much lower than any City firm, those who profess to sell at wholesale prices included.
 Any make or style desired, not in stock, promptly procured at no extra cost. My guarantee is equal to any.
W. T. SACH
 Jeweller. Blake Street, Mornington.

Various businesses in Blake Street

DRAPERY
 Millinery Gloves Hosiery
 Haberdashery
 Ladies and Childrens' Clothing.
Miss Teague
 Costumiere. Dressmaker.
 Blake Street, Mornington.

If Your Watch is Sick
 Or if you think of installing a new one
 Consult
W. T. SACH
 Horological Infirmary
 MORNINGTON.
 Advice Gratis.



RAILWAY STORE

70 Main Street

Built in 1916 by local architect Leonard Flannagan, *The Peninsula Post* described this new general store as "one of the most noteworthy buildings erected in Mornington for some years". It was called The Railway Store - the station was at the end of Blake Street. Wilson took over the business from J. Hall in 1922.

In the late 1930s Wilson and Livock's drapery department was transferred into the store on the opposite corner of Blake Street to allow the grocery section to be enlarged. This was Mornington's main department store in the 1930s. It was sold to Crofts grocery chain in the early 1950s. The drapery business lapsed at the end of its lease.



c. 1916 just after it was built



RAILWAY STORE

70 Main Street

Built in 1916 by local architect Leonard Flannagan, The Peninsula Post described this new general store as "one of the most noteworthy buildings erected in Mornington for some years". It was called The Railway Store - the station was at the end of Blake Street. Wilson took over the business from J. Hall in 1922.

In the late 1930s Wilson and Livock's drapery department was transferred into the store on the opposite corner of Blake Street to allow the grocery section to be enlarged. This was Mornington's main department store in the 1930s. It was sold to Crofts grocery chain in the early 1950s. The drapery business lapsed at the end of its lease.

Wilson Co. & Livock
 Railway Store, Mornington.

Drapery Section
 A Few Special Lines:
 Dress Suits, Ties, Hats, etc.
 Boys' New Autumn Suits, Sport Suits, two garments, in latest English Tweeds, genuine values, properly designed and perfectly made. Wear like life.

Grocery, Cookery & Biscuiterie.
 The finest selection of Biscuits and Biscuits.
 The latest novelties in Cakes, Tins, and Men's Hoisery.

Produce Department
 Get the Good of them. Fresh and Clean when delivered.

J. HALL

Desires to announce the arrival of
New Season's Goods
FOR AUTUMN TRADE.

A Splendid Variety of Favourite Styles assembled in all departments.
Our Goods are correct in Style, and the same high-grade qualities that have characterized our Goods in the past are fully maintained.
Finest Selection of Hosiery and Impassive Dress Materials—Calfanines, Tweeds, Velveteens, Vests, etc., etc., with suitable trimmings. All the newest shades are showing in goods listed above.
Fashionable Millinery—New and Distinct Models in Ladies' Coats.
Hosiery—All the Latest Shades in Ties and Ties. Black Cashmere and Lisle are unapproachable for colour and durability. **Keen Values.**

Men's Department.

New Overcoats Now Ready. Smart Models.

A Special Display of Men's Suits in Ballarat Tweeds and Fox's Serge. Style, Fit and Finish Complete.

New Season's HATS in Pure Fur, Soft Felt, Brown, Blue, Steel Grey, and Dunt, with Black Bands, also Black Velvets. Excellent Value.

MERCERY:

Fashion Shirts, attractive striped designs, etc.
Tennis Shirts, with or without collars, comfortable and inexpensive.
The latest novelties in Collars, Ties, and Men's Hoisery.
Boys' New Autumn Suits—Sport Suits, two garments, in latest English Tweeds, genuine values, properly designed and perfectly made. Wear like life.

BOOT DEPARTMENT:

Winter Goods: All descriptions of Boots and Shoes, Australia and imported.
The Finest Selection on the Peninsula.
Excellent Cold Shoes, Patch Models, French Last. The new "Current" Shoe; this stylish model is now all the rage; also the comfortable "One-piece" Glace Shoe. The Goods in all the prevailing models.



You are Specially Invited to view our Window Displays during the Easter Season.

Styles are Right. Prices are Right. Service Prompt.

J. HALL,

The Mornington Draper. Boot and Shoe Man,
Main Street, Mornington. PHONE 18.



RAILWAY STORE

70 Main Street

Built in 1916 by local architect Leonard Flannagan, *The Peninsula Post* described this new general store as "one of the most noteworthy buildings erected in Mornington for some years". It was called The Railway Store - the station was at the end of Blake Street. Wilson took over the business from J. Hall in 1922.

In the late 1930s Wilson and Livock's drapery department was transferred into the store on the opposite corner of Blake Street to allow the grocery section to be enlarged. This was Mornington's main department store in the 1930s. It was sold to Crofts grocery chain in the early 1950s. The drapery business lapsed at the end of its lease.



Wilson and Livock's staff



Halls Railway Store

RAILWAY STORE

70 Main Street

Built in 1916 by local architect Leonard Flannagan, The Peninsula Post described this new general store as "one of the most noteworthy buildings erected in Mornington for some years". It was called The Railway Store - the station was at the end of Blake Street. Wilson took over the business from J. Hall in 1922.

In the late 1930s Wilson and Livock's drapery department was transferred into the store on the opposite corner of Blake Street to allow the grocery section to be enlarged. This was Mornington's main department store in the 1930s. It was sold to Crofts grocery chain in the early 1950s. The drapery business lapsed at the end of its lease.

Wilson Co. & Livock
 Railway Stores, Mornington.
Drapery Section
 A Few Special Lines:
 Dress Suits, Ties, Hats, etc.
 Groceries, Crockery, & Ironmongery.
 Produce Department

J. JENKINS

Mornington Shoeing Forge

General Blacksmith and Wheelwright, Coachbuilder, Horse-Shoer

Builder of Vehicles of every description. Repairs on shortest notice. Tyres cut and shut. Vehicles bought, sold, or exchanged. Horseshoes made only from the best milled steel. Rubber tyres at city prices.

Main St., Mornington

**As you travel
along the street to
the Hotel**



RAILWAY STORE

70 Main Street

Built in 1916 by local architect Leonard Flannagan, The Peninsula Post described this new general store as "one of the most noteworthy buildings erected in Morningside for some years". It was called The Railway Store - the station was at the end of Blake Street. Wilson took over the business from J. Hall in 1922.

In the late 1930s Wilson and Livock's drapery department was transferred into the store on the opposite corner of Blake Street to allow the grocery section to be enlarged. This was Morningside's main department store in the 1930s. It was sold to Crofts grocery chain in the early 1950s. The drapery business lapsed at the end of its lease.

Wilson Co. & Livock
Railway Stores, Morningside.
Drapery Section
A Few Special Lines:
Curtain Tapes, Lace, Linen, Cotton, Wool, Silk, Rayon, etc.
Curtain Hardware, Valances, Blinds, etc.
Curtain Trimmings, etc.
It will be specially made to order in all the latest styles.
Grocery, Crockery & Ironmongery.
Produce Department



The Forge was down behind the shops

Main St Mornington

6



THE GRAND HOTEL 124 Main Street

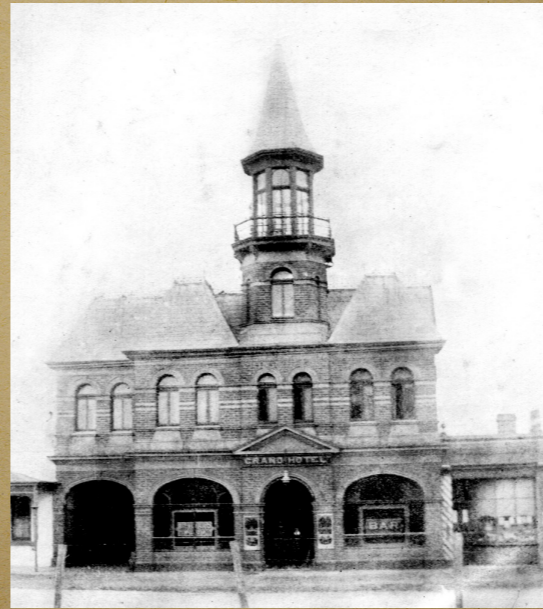
Built in 1889, this building began as the Grand Coffee Palace, one of many such establishments encouraged by the Temperance Movement. The architect was William Pitt who had designed the Windsor Hotel in Melbourne. The original building had three bays beneath a central tower and steeple with an arched carriage way to Swift's stables behind.

Cornelius Crowley was the first owner. He also owned the Cricketer's Arms Hotel next door. This was built in 1868 with a decorative parapet of finials and urns. The liquor licence was transferred in the early 1890s from the Arms to the Coffee Palace which was then renamed the Grand Hotel. The Cricketer's Arms building then became a car hire and coach depot before being replaced by a furniture store in the late 1940s and then various businesses over the years.

The Grand was expanded to its current size in 1919. The tower has always been a landmark feature in the town. The current design, constructed in 1967, is the third. The building retains its original distinctive French Renaissance revival style roof and some internal features.



Mornington Chamber of Commerce



1890s. Note the barber's shop on right

Main St Mornington

6



THE GRAND HOTEL 124 Main Street

Built in 1880, this building began as the Grand Coffee Palace, one of many such establishments encouraged by the Temperance Movement. The architect was William Pitt who had designed the Windsor Hotel in Melbourne. The original building had three bays beneath a central tower and steeple with an arched carriageway to Swift's stables behind.

Cornelius Crowley was the first owner. He also owned the Cricketer's Arms Hotel next door. This was built in 1868 with a decorative parapet of finials and urns. The liquor licence was transferred in the early 1890s from the Arms to the Coffee Palace which was then renamed the Grand Hotel. The Cricketer's Arms building then became a car hire and coach depot before being replaced by a furniture store in the late 1940s and then various businesses over the years.

The Grand was expanded to its current size in 1919. The tower has always been a landmark feature in the town. The current design, constructed in 1967, is the third. The building retains its original distinctive French Renaissance revival style roof and some internal features.



Mornington Chamber of Commerce

Another view - note the Cricketer's Arms Hotel on the left

Main St Mornington

6



THE GRAND HOTEL 124 Main Street

Built in 1889, this building began as the Grand Coffee Palace, one of many such establishments encouraged by the Temperance Movement. The architect was William Pitt who had designed the Windsor Hotel in Melbourne. The original building had three bays beneath a central tower and steeple with an arched carriage way to Swift's stables behind.

Cornelius Crowley was the first owner. He also owned the Cricketer's Arms Hotel next door. This was built in 1908 with a decorative parapet of finials and urns. The liquor licence was transferred in the early 1930s from the Arms to the Coffee Palace which was then renamed the Grand Hotel. The Cricketer's Arms building then became a car hire and coach depot before being replaced by a furniture store in the late 1940s and then various businesses over the years.

The Grand was expanded to its current size in 1919. The tower has always been a landmark feature in the town. The current design, constructed in 1967, is the third. The building retains its original distinctive French Renaissance revival style roof and some internal features.



Mornington Chamber of Commerce



1930s/40s

Main St Mornington

6



THE GRAND HOTEL 124 Main Street

Built in 1889, this building began as the Grand Coffee Palace, one of many such establishments encouraged by the Temperance Movement. The architect was William Pitt who had designed the Windsor Hotel in Melbourne. The original building had three bays beneath a central tower and steeple with an arched carriage way to Swift's stables behind.

Cornelius Crowley was the first owner. He also owned the Cricketer's Arms Hotel next door. This was built in 1908 with a decorative parapet of frials and urns. The liquor licence was transferred in the early 1930s from the Arms to the Coffee Palace which was then renamed the Grand Hotel. The Cricketer's Arms building then became a car hire and coach depot before being replaced by a furniture store in the late 1940s and then various businesses over the years.

The Grand was expanded to its current size in 1919. The tower has always been a landmark feature in the town. The current design, constructed in 1967, is the third. The building retains its original distinctive French Renaissance revival style roof and some internal features.

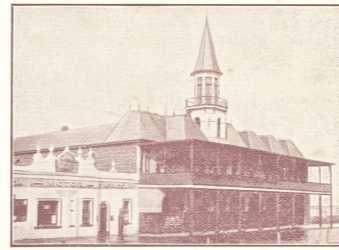


Mornington Chamber of Commerce

Phone : 1.

GRAND HOTEL

MORNINGTON



Up-to-date Bottle Department Now Open

Separate Entrance.

All brands of Ales, Wines and Spirits stocked.

Delivery made to any address.

Hampers made up.

Specials :—BULK PORT WINE, 2/6 bottle ;
12/6 gallon

SHERRY, 3/- bottle

BULK SCOTCH WHISKY, 11/- bottle ; £3
per gallon

GEO. EMERY, LICENSEE.

6



THE GRAND HOTEL 124 Main Street

Built in 1889, this building began as the Grand Coffee Palace, one of many such establishments encouraged by the Temperance Movement. The architect was William Pitt who had designed the Windsor Hotel in Melbourne. The original building had three bays beneath a central tower and steeple with an arched carriage way to Swift's stables behind.

Cornelius Crowley was the first owner. He also owned the Cricketer's Arms Hotel next door. This was built in 1909 with a decorative parapet of frials and urns. The liquor licence was transferred in the early 1920s from the Arms to the Coffee Palace which was then renamed the Grand Hotel. The Cricketer's Arms building then became a car hire and coach depot before being replaced by a furniture store in the late 1940s and then various businesses over the years.

The Grand was expanded to its current size in 1919. The tower has always been a landmark feature in the town. The current design, constructed in 1967, is the third. The building retains its original distinctive French Renaissance revival style roof and some internal features.



Mornington Chamber of Commerce

Grand Hotel, Mornington

Phone No. 1.

(TWO MINUTES WALK FROM STATION.)

(Under New Management.)



Garage and Billiard Room.

E. HARRIS, Proprietress.

The above conveniently situated and popular Hostelry leaves nothing wanting to please local patrons and visitors from other parts.

Bathing Box at Fisherman's Bend.

Special Attention given to Country Orders the Bottle Department being up-to-date and supplied with only the best brands of Wines, Spirits, and Malt Liquors at Market Rates.

Commodious Diningroom, and the Cuisine is under Expert Direction



THE GRAND HOTEL 124 Main Street

Built in 1889, this building began as the Grand Coffee Palace, one of many such establishments encouraged by the Temperance Movement. The architect was William Pitt who had designed the Windsor Hotel in Melbourne. The original building had three bays beneath a central tower and stables with an arched carriage-way to Swift's stables behind.

Cornelius Crowley was the first owner. He also owned the Cricketer's Arms Hotel next door. This was built in 1909 with a decorative parapet of frials and urns. The liquor licence was transferred in the early 1920s from the Arms to the Coffee Palace which was then renamed the Grand Hotel. The Cricketer's Arms building then became a car hire and coach depot before being replaced by a furniture store in the late 1940s and then various businesses over the years.

The Grand was expanded to its current size in 1919. The tower has always been a landmark feature in the town. The current design, constructed in 1967, is the third. The building retains its original distinctive French Renaissance revival style roof and some internal features.



Mornington Chamber of Commerce

THIS LIX 'EM

GRAND HOTEL, MORNINGTON 'Phone No. 1

PRICE LIST

SCOTCH WHISKIES.		GINS AND GENEVA.		WINES.		
s.	d.	(Imported.)	s.	d.	s.	d.
Dewar's Imp. Liqueur	4 9	Gilbey's London Dry	4 6	Claret No. O	3 0	
Watson's No. 10	4 8	D.C.L.	4 3	" "	2 0	
Thorne's	4 8	King Charles London	4 3	Chablis	3 0	
Dewar's Special, rep qts	4 0	Dry	4 3	Madeira	2 0	
" " imp pts	3 0	Bols (Stone Gin)	5 0	Port Invalid, quart	1 6	
Dewar's Bulk, specially		Burnett's (Old Tom)	4 6	" " gallon	6 0	
imported, gallon	23 0	SCHNAPPS (Imported).		Port Special Reserve	3 6	
Usher's "Green Seal"	4 9	Wolfe's	4 8	Hock	3 0	
Johnnie Walker	4 6	Seahorse	4 3	" "	2 0	
" "	4 9	ALES.		Sherry	3 0	
Black & White	5 0	Bass (Foster's), pt.	1 0	CORDIALS.		
Royal Liqueur	4 8	" " quart	1 3	Cloves	1 0	
Flasks	2 6	McEwan's, pint	1 0	Green Ginger	1 3	
Half-Flasks	1 6	" " quart	1 3	Lime Juice Cordial	1 0	
IRISH WHISKIES.		Abbotsford O.B.	0 6	Lemon Squash	1 6	
Mitchell's Crown Proof,		Victoria Bitter O.B.	0 6	Peppermint	1 0	
quarts	6 3	LAGER.		Raspberry Vinegar	1 0	
Mitchell's Crown Proof,		Peter Walker's English		Quinine Wine, Atkin	2 6	
pints	3 6	Lager	1 3 and 1 0	O.T., Dixon's	1 3	
BRANDIES.		Foster's	0 7	Ginger Beer, T. Row-		
Hennessey's 3-Star	8 0	STOUTS (Guinness').		land's, stone bottles	0 4	
" O.B.	6 6	Boar's Head, pint	1 0	Bottles extra.		
Martell's O.B.	6 6	" " quart	1 3	Koomah Spa	0 4	
Hans Irvine's 3-Star	5 3	Bull Dog, pint	1 0	Dry Ginger Ale	0 4	
Flasks	2 6	" " quart	1 3	Bottles extra.		
" "	1 6	Abbotsford (Invalid)	0 7			

Subject to Market Fluctuations

Every Brand Guaranteed True to Label

LOUIS HARRISON, Proprietor

Main St Mornington

6



THE GRAND HOTEL 124 Main Street

Built in 1889, this building began as the Grand Coffee Palace, one of many such establishments encouraged by the Temperance Movement. The architect was William Pitt who had designed the Windsor Hotel in Melbourne. The original building had three bays beneath a central tower and steeple with an arched carriage way to Swift's stables behind.

Cornelius Crowley was the first owner. He also owned the Cricketer's Arms Hotel next door. This was built in 1868 with a decorative parapet of finials and urns. The liquor licence was transferred in the early 1890s from the Arms to the Coffee Palace which was then renamed the Grand Hotel. The Cricketer's Arms building then became a car hire and coach depot before being replaced by a furniture store in the late 1940s and then various businesses over the years.

The Grand was expanded to its current size in 1919. The tower has always been a landmark feature in the town. The current design, constructed in 1967, is the third. The building retains its original distinctive French Renaissance revival style roof and some internal features.



Mornington Chamber of Commerce



Tanti Hotel - rebuilt many times

Main St Mornington

6



THE GRAND HOTEL 124 Main Street

Built in 1889, this building began as the Grand Coffee Palace, one of many such establishments encouraged by the Temperance Movement. The architect was William Pitt who had designed the Windsor Hotel in Melbourne. The original building had three bays beneath a central tower and steeple with an arched carriage way to Swift's stables behind.

Cornelius Crowley was the first owner. He also owned the Cricketer's Arms Hotel next door. This was built in 1908 with a decorative parapet of finials and urns. The liquor licence was transferred in the early 1930s from the Arms to the Coffee Palace which was then renamed the Grand Hotel. The Cricketer's Arms building then became a car hire and coach depot before being replaced by a furniture store in the late 1940s and then various businesses over the years.

The Grand was expanded to its current size in 1919. The tower has always been a landmark feature in the town. The current design, constructed in 1967, is the third. The building retains its original distinctive French Renaissance revival style roof and some internal features.



Mornington Chamber of Commerce



Taylor and Ritchie's motor garage

Heritage Walk

7



MAIN STREET SOUTH

The southern end of Main Street beyond Barkly Street was sparsely populated until the 1970s. There was one substantial general business selling groceries and drapery on Vale Street corner in the 1920s (Fosters then Gaults). Little's grocery operated on the western side near Barkly Street corner from 1928-40.

On the eastern corner of Barkly Street was the major timber and hardware business established by builder and early resident William Grover. His son Joseph, builder and undertaker, occupied an adjacent property in Barkly Street. These businesses were purchased

by John Summerland prior to the First World War but were demolished in the late 1970s.

Gault's Stores
FARMERS
TOOLS, DRAPERY
&
FERTILIZER
ESTD 1928
GALTS STORES

E. A. Little
GROCERIES
ESTD 1928
LITTLE'S GROCERIES
ESTD 1928

MORNINGTON TIMBER YARD.
John R. Summerland
Builder, Contractor & Timber Merchant
Aired Ironmongery.
Large Stocks of all Builders Materials, Bells, Buckets, Red Gum, Palms, Iron, etc. Also, Builders Glass, Window Glass, LIME, CEMENT, etc.
FUNERALS privately conducted on shorter notice.



Heritage Walk



MAIN STREET SOUTH

The southern end of Main Street beyond Barky Street was sparsely populated until the 1970s. There was one substantial general business selling groceries and drapery on Vale Street corner in the 1920s (Fosters then Gaults). Little's grocery operated on the western side near Barky Street corner from 1928-40.

On the eastern corner of Barky Street was the major timber and hardware business established by builder and early resident William Grover. His son Joseph, builder and undertaker, occupied an adjacent property in Barky Street. These businesses were purchased

by John Summerland prior to the First World War but were demolished in the late 1970s.

Gault's Stores
FARMERS
 75, 80, 200-45
FERTILIZER
GAULT'S STORES

E. A. Little
GROCER

MORNINGTON TIMBER YARD.
John R. Summerland
 Builder, Contractor & Timber Merchant
 Aired Ironmongery.
 Large Stocks of all Builders Materials, Sash, Blinds, Red Gum, Maple, Pine, Elm, Oak, Yellow Pine, Oregon Walnut, LIME, CEMENT, etc.
 FUNERALER (privately conducted on other calls).



Joseph Grover and Family

Heritage Walk



MAIN STREET SOUTH

The southern end of Main Street beyond Barkly Street was sparsely populated until the 1970s. There was one substantial general business selling groceries and drapery on Vale Street corner in the 1920s (Fosters then Gaults). Little's grocery operated on the western side near Barkly Street corner from 1928-40.

On the eastern corner of Barkly Street was the major timber and hardware business established by builder and early resident William Grover. His son Joseph, builder and undertaker, occupied an adjacent property in Barkly Street. These businesses were purchased

by John Summerland prior to the First World War but were demolished in the late 1970s.

Gault's Stores
 FARMERS
 TO ORDER
 FERTILIZER
 AND
GAULT'S STORES

E. A. Little
 GROCERIES

MORNINGTON TIMBER YARD.
John R. Summerland
 Builder, Contractor & Timber Merchant
 And Ironmonger.
 Large Stocks of all Builders Materials, Sash, Windows, Red Gum, Maple, Pine, Oak, Cedar, Yellow Pine, Tanning Materials,
 LIME, CEMENT, etc.
 FUNERALS privately conducted on shorter notice.





MAIN STREET SOUTH

The southern end of Main Street beyond Barkly Street was sparsely populated until the 1970s. There was one substantial general business selling groceries and drapery on Vale Street corner in the 1920s (Fosters then Gaults). Little's grocery operated on the western side near Barkly Street corner from 1928-40.

On the eastern corner of Barkly Street was the major timber and hardware business established by builder and early resident William Grover. His son Joseph, builder and undertaker, occupied an adjacent property in Barkly Street. These businesses were purchased

by John Summerland prior to the First World War but were demolished in the late 1970s.

Gault's Stores
FARMERS
TO ORDER
FERTILIZER
AND
GAULT'S STORES

E. A. Little
GROCERIES

MORNINGTON TIMBER YARD.
John R. Summerland
Builder, Carpenter & Timber Merchant
Also Ironmonger.
Sole Agents of all Builders Materials, Sash, Windows, Blinds, Glass, Paper, Paints, Oils, Glue, Timber, Stone, Slating Materials, LIME, CEMENT, etc.
FUNERALS privately conducted on shorter notice.

R. F. Pitchford
Coachbuilder, Wheelwright,
General Blacksmith
and Farrier.
MORNINGTON.

Vehicles of all kinds built to order
and repaired.
Horses carefully shod. All work
promptly executed.

Painting, Trimming, and all branches of
the trade done at reasonable prices.

Main St Mornington

8



OLD FIRE STATION

137 Main Street

The Mornington Urban Fire Brigade was formed at a meeting in the Mechanics Hall in 1917 and the fire station was erected in 1919 by public subscription. The building was designed by local architect L.J. Flanagan and built by local builder Thomas Green. Volunteers were summoned by a bell erected on a tower on the left hand side of the building. The design of this two-bay building was so well thought of by the Country Fire Brigade Board that they adopted it as the standard for all country fire stations.

It remained the premises of the Mornington Fire Brigade until 1969 when a new station was built near Elizabeth Street.



Mornington Chamber of Commerce



Main St Mornington

8



OLD FIRE STATION

137 Main Street

The Mornington Urban Fire Brigade was formed at a meeting in the Mechanics Hall in 1917 and the fire station was erected in 1919 by public subscription. The building was designed by local architect L.J. Flanagan and built by local builder Thomas Green. Volunteers were summoned by a bell erected on a tower on the left hand side of the building. The design of this two-bay building was so well thought of by the Country Fire Brigade Board that they adopted it as the standard for all country fire stations.

It remained the premises of the Mornington Fire Brigade until 1969 when a new station was built near Elizabeth Street.



Mornington Chamber of Commerce



Mornington Fire Brigade

Main St Mornington

8



OLD FIRE STATION

137 Main Street

The Mornington Urban Fire Brigade was formed at a meeting in the Mechanics Hall in 1917 and the fire station was erected in 1919 by public subscription. The building was designed by local architect L.J. Flanagan and built by local builder Thomas Green. Volunteers were summoned by a bell erected on a tower on the left hand side of the building. The design of this two-bay building was so well thought of by the Country Fire Brigade Board that they adopted it as the standard for all country fire stations.

It remained the premises of the Mornington Fire Brigade until 1969 when a new station was built near Elizabeth Street.



Mornington Chamber of Commerce



Reels and ladder fire ready

Main St Mornington

8



OLD FIRE STATION

137 Main Street

The Mornington Urban Fire Brigade was formed at a meeting in the Mechanics Hall in 1917 and the fire station was erected in 1919 by public subscription. The building was designed by local architect L.J. Flanagan and built by local builder Thomas Green. Volunteers were summoned by a bell erected on a tower on the left hand side of the building. The design of this two-bay building was so well thought of by the Country Fire Brigade Board that they adopted it as the standard for all country fire stations.

It remained the premises of the Mornington Fire Brigade until 1969 when a new station was built near Elizabeth Street.



Mornington Chamber of Commerce



Mornington competing in Fire Games

Plaza cafe



PLAZA CAFE

115 Main Street (across is inside 115 Cafe Bar)
This cafe was established in the early 1930s next door to the Plaza Theatre (now demolished), which had relocated from the Mechanics Hall to the new cinema building. An advertisement in *The Peninsula Post* invited customers: "When you are at the Picture these cold nights, dash into Waller's for a hot malted milk or a hot Beehive (beef tea). Price 6d. Our pies are known over the Peninsula".
The cafe took bookings for the Theatre which was also used for dances and other entertainments.
At one time an estate agent occupied this shop.
The original moulded metal ceiling has been retained.



Plaza cinema was set back from street

Plaza cafe



PLAZA CAFE

115 Main Street (square is inside 115 Cafe Bar)
This cafe was established in the early 1930s next door to the Plaza Theatre (now demolished), which had relocated from the Mechanics Hall to the new cinema building. An advertisement in *The Peninsula Post* invited customers: "When you are at the Picture these cold nights, dash into Waller's for a hot malted milk or a hot Beehive (beef tea). Price 6d. Our pies are known over the Peninsula."

The cafe took bookings for the Theatre which was also used for dances and other entertainments.

At one time an estate agent occupied this shop.

The original moulded metal ceiling has been retained.



PLAZA THEATRES MORNINGTON & FRANKSTON

THE LEADING TALKING PICTURE HOUSES
ON THE PENINSULA.

COMMODIOUS MODERN BUILDINGS AND
EQUIPMENT.

Buildings Well Ventilated and Cool in Summer.

Comfortable Seating Accommodation.

First Class Programmes. Special Features Screened every
Night during Holiday Season. All the most Up-to-date
Pictures.



The Proprietors Offer—
FACILITIES FOR DANCES, PUBLIC MEETINGS
AND OTHER PUBLIC FUNCTIONS IN THEIR
COMMODIOUS BUILDINGS.

THE PLAZA THEATRE PROPRIETARY LIMITED
Mornington—Tel. 242. Frankston—Tel. 242.

Heritage Walk

9

Plaza cafe



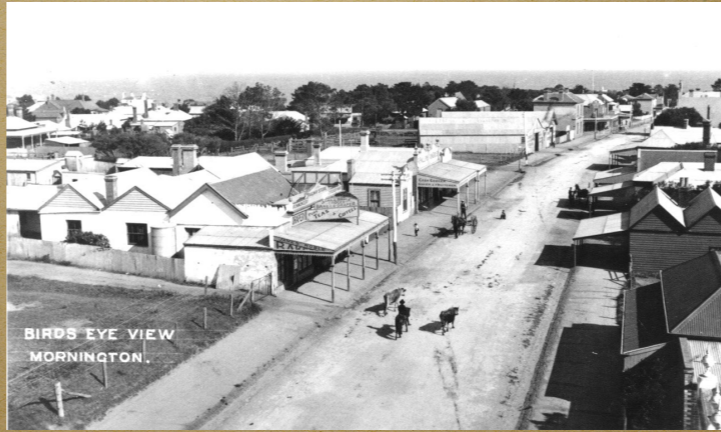
PLAZA CAFE

115 Main Street (across is inside 115 Cafe Bar)
This cafe was established in the early 1930s next door to the Plaza Theatre (now demolished), which had relocated from the Mechanics Hall to the new cinema building. An advertisement in *The Peninsula Post* invited customers: "When you are at the Picture these cold nights, dash into Waller's for a hot malted milk or a hot Beehive (beef tea). Price 6d. Our pies are known over the Peninsula."

The cafe took bookings for the Theatre which was also used for dances and other entertainments.

At one time an estate agent occupied this shop.

The original moulded metal ceiling has been retained.



Mornington & District Historical Society

. . . as you walk down to No. 78 - 81

Plaza cafe



PLAZA CAFE

115 Main Street (across is inside 115 Cafe Bar)
 This cafe was established in the early 1930s next door to the Plaza Theatre (now demolished), which had relocated from the Mechanics Hall to the new cinema building. An advertisement in *The Peninsula Post* invited customers: "When you are at the Picture these cold nights, dash into Waller's for a hot malted milk or a hot Beehive (beef tea). Price 6d. Our pies are known over the Peninsula".

The cafe took bookings for the Theatre which was also used for dances and other entertainments.

At one time an estate agent occupied this shop.

The original moulded metal ceiling has been retained.



J. H. DAVIES
 BAKER and STOREKEEPER Opp. Grand Hotel

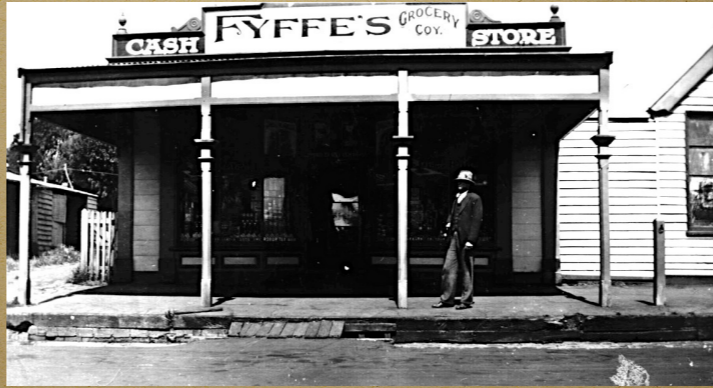
Prompt Delivery Best Goods Lowest Prices

Telephone No. 18



PLAZA CAFE

115 Main Street (across is inside 115 Cafe Bar)
This cafe was established in the early 1930s next door to the Plaza Theatre (now demolished), which had relocated from the Mechanics Hall to the new cinema building. An advertisement in *The Peninsula Post* invited customers: "When you are at the Picture these cold nights, dash into Waller's for a hot malted milk or a hot Beehive (beef tea). Price 6d. Our pies are known over the Peninsula."
The cafe took bookings for the Theatre which was also used for dances and other entertainments.
At one time an estate agent occupied this shop.
The original moulded metal ceiling has been retained.



A typical Main Street business



PLAZA CAFE

115 Main Street (across is inside 115 Cafe Bar)
 This cafe was established in the early 1930s next door to the Plaza Theatre (now demolished), which had relocated from the Mechanics Hall to the new cinema building. An advertisement in *The Peninsula Post* invited customers: "When you are at the Picture these cold nights, dash into Waller's for a hot malted milk or a hot Beehive (beef tea). Price 6d. Our pies are known over the Peninsula".

The cafe took bookings for the Theatre which was also used for dances and other entertainments.

At one time an estate agent occupied this shop.

The original moulded metal ceiling has been retained.



Ladies' Drapery.

MRS. S. J. SHEEDY

Millinery, Ladies and Children's Ready-to-wear Felts, Molly O's,
 Jacky Coogans. Jumper Wool, Art Needlework.

Hosiery, Stationery, School Requisites. Glassware and Fancy Goods

Fresh Goods Every Week. Dazel Dyes.

PHOTOGRAPHY.—All Descriptions. Appointments made. Developing
 and Printing. One Day Service. Kodak Supplies. Films Stocked
 Main-street, Mornington.

Main St Mornington

10 BRADFORD DAIRY

7081 Main Street
A dairy occupied this site in the early 1900s. In 1923, E.G. Barney Bradford, a First World War veteran, bought the business from the Sherlock brothers, calling it "Pines" Dairy, delivering milk in Mornington and Mt Martha.

In 1936 he renovated the building which still retains some of the original art deco details in the tiling, the metal window frames and the decoration on the parapet. He continued his business until 1960.

As you continue down the street, you will also notice a water fountain in Empire Mall. This was relocated to Mornington Park at the end of Main Street. This was given to the township as a gift in 1924 by Jane Balcombe Murphy in memory of her father, Alexander Balcombe of the Briers.



Balcombe Fountain originally at the entrance to Mornington Park

Mornington Chamber of Commerce



Barney Bradford WWI

Main St Mornington

10 BRADFORD DAIRY

7081 Main Street
 A dairy occupied this site in the early 1900s. In 1928, E.G. "Barney" Bradford, a First World War veteran, bought the business from the Sherlock brothers, calling it "Pines" Dairy, delivering milk in Mornington and Mt. Martha.

In 1936 he renovated the building which still retains some of the original art deco details in the tiling, the metal window frames and the decoration on the parapet. He continued his business until 1960.

As you continue down the street, you will also notice a water fountain in Empire Mall. This was relocated to Empire Mall from the entrance to Mornington Park at the end of Main Street. This was given to the township as a gift in 1924 by Jane Balcombe Murphy in memory of her father, Alexander Balcombe of the Briers.



Balcombe Fountain originally at the entrance to Mornington Park

Mornington Chamber of Commerce



"Pines" Dairy
 Telephone 70. P.O. Box 6
 Mornington

E. G. BRADFORD
 (Late Sherlock Bros.)

—PURE MILK AND CREAM—
 Daily Delivery to Mornington and Mt
 Martha

All communications promptly attended to
 (Late A.I.F.)

"Pines" Dairy

DAILY DELIVERY TO MORNINGTON AND MT. MARTHA
NURSERY MILK FROM TUBERCULIN TESTED COWS A SPECIALITY
PURE MILK AND CREAM

ALL COMMUNICATIONS PROMPTLY ATTENDED TO
E. G. Bradford
 'PHONE: MORNINGTON 70
 P.O. BOX 6

Main St Mornington

10 BRADFORD DAIRY

7881 Main Street
A dairy occupied this site in the early 1900s. In 1928, E.G. Barney Bradford, a First World War veteran, bought the business from the Sherlock brothers, calling it "Pines" Dairy, delivering milk in Mornington and Mt Martha.

In 1936 he renovated the building which still retains some of the original art deco details in the tiling, the metal window frames and the decoration on the parapet. He continued his business until 1960.

As you continue down the street, you will also notice a water fountain in Empire Mall. This was relocated to Mornington Park at the end of Main Street. This was given to the township as a gift in 1924 by Jane Balcombe Murphy in memory of her father, Alexander Balcombe of the Briers.



Balcombe Fountain originally at the entrance to Mornington Park

Mornington Chamber of Commerce

MORNINGTON. MONDAY, DEC. 26.

THE SEASON'S RAREST TREAT

Perry Bros.' Gigantic Circus and Zoo

40—MIGHTY ACTS—40

A Brilliant Coterie of World-famous Circus Stars, including Famous Flying Lorenz Family; Achai Troupe Perch and Ladder Balancers. CAP. MONZALA and his Performing Elephants, Lions and Tigers, including Tommy, the smallest Elephant on earth, who dances the Charleston and plays his own music. CESTRICO, the Great Acrobatic Waiter, direct from Italy. ANNA and her Performing Dogs. SIGNOR ALBERTO, the Wizard of the wire. NOVELLO and his Beautiful Posing Dogs. TEX HARRISON, the Cowboy Rope Spinner and Lariat Thrower (direct from Texas). Together with the full strength of the Perry Organisation complete. A full and comprehensive programme. POPULAR PRICES. F. W. DATURN, Advance Agent.

G. Daw & Son 1913



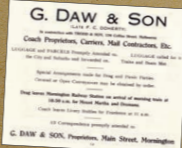
LIVERY & COACHING STABLES

65 Main Street

These stables offered a coach and carrying service to the rest of the Peninsula. The business evolved during the 1920s into a motor garage as cars began to replace the horse and cart. From the rear the original roof and back wall of this galvanised iron building are still to be seen.

A grocery store was later built on part of the site which Bill Pratt subsequently converted to Morningside's first self-service grocery store in the 1950s after

a visit to the United States. Pratts store later became the Sainsbury's supermarket chain in Australia.



G. Daw & Son 1913

11



LIVERY & COACHING STABLES

65 Main Street

These stables offered a coach and carrying service to the rest of the Peninsula. The business evolved during the 1920s into a motor garage as cars began to replace the horse and cart. From the rear the original roof and back wall of this galvanised iron building are still to be seen.

A grocery store was later built on part of the site which Bill Pratt subsequently converted to Mornington's first self-service grocery store in the 1950s after

a visit to the United States. Pratt's store later became the Sainsbury's supermarket chain in Australia.



Mornington & District Historical Society



J. BLACKER

Mornington Grain and Produce Store

Main St Mornington

12 ORIENTAL BANK & ALLCHIN'S STORE

Pioneer resident Thomas Allchin constructed this building with bricks made from his clay pit on the lower corner of his Sutton Grange Estate. He leased the building to The Oriental Bank which traded there from 1875 to 1890.

The building was later converted into retail premises becoming Herb Dickinson's The Point Furnishing store in 1923 and then The Point Hardware store for many years. The building now reveals little of its former appearance except for the characteristic splayed corner and rectangular upper level double-hung windows.

On the opposite corner is the site of Allchin's store which Thomas Allchin began in 1859, adding a second storey in 1872. It grew to become a major general store run by his wife Sarah. Goods were brought from Melbourne by Allchin's ketches Maggie and Governor Latrobe.

Following the Allchins, it was run in succession by Nunn, Higgs, Dault and then Fyffe before finally becoming Crosgh's delicatessen.

The building was demolished to make way for the Commonwealth Bank in the early 1960s.



Oriental Bank - 51 Main Street



Allchin's store c1900 - 48 to 47 Main St

Mornington Chamber of Commerce



Thomas Allchin

Main St Mornington

12 ORIENTAL BANK & ALLCHIN'S STORE

Pioneer resident Thomas Allchin constructed this building with bricks made from his clay pit on the lower corner of his Sutton Grange Estate. He leased the building to The Oriental Bank which traded there from 1875 to 1890.

The building was later converted into retail premises becoming Herb Dickinson's The Point Furnishing store in 1925 and then The Point Hardware store for many years. The building now reveals little of its former appearance except for the characteristic splayed corner and rectangular upper level double-hung windows.

On the opposite corner is the site of Allchin's store which Thomas Allchin began in 1859, adding a second storey in 1872. It grew to become a major general store run by his wife Sarah. Goods were brought from Melbourne by Allchin's ketches Maggie and Governor Latrobe.

Following the Allchins, it was run in succession by Nunn, Higgs, Dault and then Fyffe before finally becoming Crosgh's delicatessen.

The building was demolished to make way for the Commonwealth Bank in the early 1960s.



Oriental Bank - 51 Main Street



Allchin's store c1900 - 45 to 47 Main St

Mornington Chamber of Commerce



Oriental Bank at Schnapper Point.

Main St Mornington

12 ORIENTAL BANK & ALLCHIN'S STORE

Pioneer resident Thomas Allchin constructed this building with bricks made from his clay pit on the lower corner of his Sutton Grange Estate. He leased the building to The Oriental Bank which traded there from 1875 to 1890.

The building was later converted into retail premises becoming Herb Dickinson's The Point Furnishing store in 1925 and then The Point Hardware store for many years. The building now reveals little of its former appearance except for the characteristic splayed corner and rectangular upper level double-hung windows.

On the opposite corner is the site of Allchin's store which Thomas Allchin began in 1859, adding a second storey in 1872. It grew to become a major general store run by his wife Sarah. Goods were brought from Melbourne by Allchin's ketches Maggie and Governor Latrobe.

Following the Allchins, it was run in succession by Nunn, Higgs, Dault and then Fyffe before finally becoming Crosgh's delicatessen.

The building was demolished to make way for the Commonwealth Bank in the early 1960s.



Oriental Bank - 51 Main Street



Allchin's store c1900 - 46 to 47 Main St

Mornington Chamber of Commerce



Allchin's brick works

Main St Mornington

12 ORIENTAL BANK & ALLCHIN'S STORE

Pioneer resident Thomas Allchin constructed this building with bricks made from his clay pit on the lower corner of his Sutton Grange Estate. He leased the building to The Oriental Bank which traded there from 1875 to 1890.

The building was later converted into retail premises becoming Herb Dickinson's The Point Furnishing store in 1925 and then The Point Hardware store for many years. The building now reveals little of its former appearance except for the characteristic splayed corner and rectangular upper level double-hung windows.

On the opposite corner is the site of Allchin's store which Thomas Allchin began in 1859, adding a second storey in 1872. It grew to become a major general store run by his wife Sarah. Goods were brought from Melbourne by Allchin's ketches Maggie and Governor Latrobe.

Following the Allchins, it was run in succession by Nunn, Higgs, Dault and then Fyffe before finally becoming Crosgh's delicatessen.

The building was demolished to make way for the Commonwealth Bank in the early 1960s.



Oriental Bank - 51 Main Street



Allchin's store c1900 - 46 to 47 Main St

Mornington Chamber of Commerce



Main St Mornington

12 ORIENTAL BANK & ALLCHIN'S STORE

Pioneer resident Thomas Allchin constructed this building with bricks made from his clay pit on the lower corner of his Sutton Grange Estate. He leased the building to The Oriental Bank which traded there from 1875 to 1890.

The building was later converted into retail premises becoming Herb Dickinson's The Point Furnishing store in 1925 and then The Point Hardware store for many years. The building now reveals little of its former appearance except for the characteristic splayed corner and rectangular upper level double-hung windows.

On the opposite corner is the site of Allchin's store which Thomas Allchin began in 1859, adding a second storey in 1872. It grew to become a major general store run by his wife Sarah. Goods were brought from Melbourne by Allchin's ketches Maggie and Governor Latrobe.

Following the Allchins, it was run in succession by Nunn, Higgs, Dault and then Fyffe before finally becoming Crosgh's delicatessen.

The building was demolished to make way for the Commonwealth Bank in the early 1960s.



Oriental Bank - 51 Main Street



Allchin's store c1900 - 46 to 47 Main St

Mornington Chamber of Commerce



Sutton Grange

12 **ORIENTAL BANK & ALLCHIN'S STORE**

Pioneer resident Thomas Allchin constructed this building with bricks made from his clay pit on the lower corner of his Sutton Grange Estate. He leased the building to The Oriental Bank which traded there from 1875 to 1890.

The building was later converted into retail premises becoming Herb Dickinson's The Point Furnishing store in 1925 and then The Point Hardware store for many years. The building now reveals little of its former appearance except for the characteristic splayed corner and rectangular upper level double-hung windows.

On the opposite corner is the site of Allchin's store which Thomas Allchin began in 1859, adding a second storey in 1872. It grew to become a major general store run by his wife Sarah. Goods were brought from Melbourne by Allchin's ketches Maggie and Governor Latrobe.

Following the Allchins, it was run in succession by Nunn, Higgs, Dault and then Fyffe before finally becoming Cross's delicatessen.

The building was demolished to make way for the Commonwealth Bank in the early 1960s.



Oriental Bank - 51 Main Street



Allchin's store c1860 - 46 to 47 Main St

Mornington Chamber of Commerce

A. NUNN & SON,

GENERAL
Storekeepers and Bakers,

Mornington & Somerville.

Grocery, Wines and Spirits, Drapery, Crockery, Boots
and Shoes, Horse Feed, &c., &c.

First Class Goods at Strictly Moderate Prices.



Duncan Forsythe

MALES BUTCHERY AND THE HAIRDRESSERS

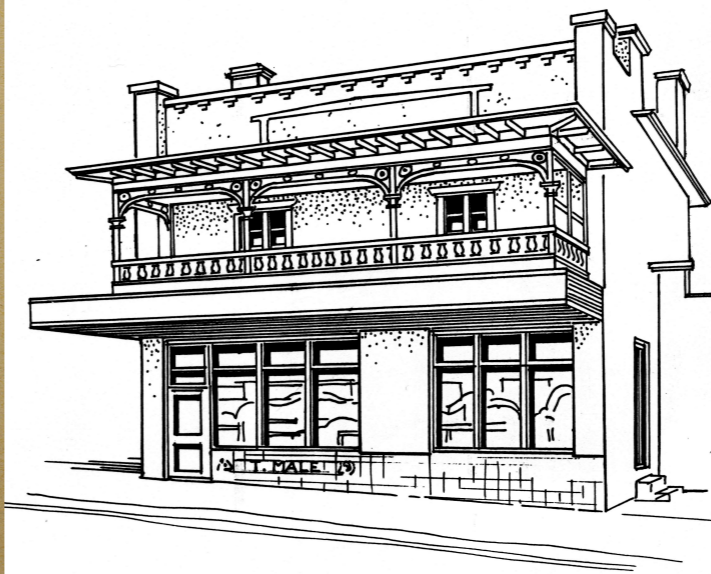
39 Main Street

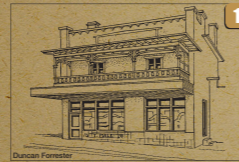
Built in the late 1800s, this was one of several butchers shops in the town. First occupied by James Smith Adams, it was purchased by Tom Male in 1918. The Male family owned the business for over 30 years. They had a slaughter-yard in Bantons Rd, Monroevic.

Behind the shop were stables as deliveries were made by horse and cart. The shop front of plate glass windows was surrounded by tiles on which 'Male' was moulded. The sign 'Butcher' painted originally on the external brick wall can still be seen in the adjacent shop (No. 41).

The adjoining building (No 43) was added in 1934 by Tom Male to enable his friend Alf Sexton to continue his hairdressing business. It has continued to operate for

more than 70 years, making it the oldest continuing retail business in Monnington.





Duncan Forsythe

MALES BUTCHERY AND THE HAIRDRESSERS

39 Main Street

Built in the late 1800s, this was one of several butchers shops in the town. First occupied by James Smith Adams, it was purchased by Tom Male in 1918. The Male family owned the business for over 30 years. They had a slaughter-yard in Bantons Rd, Monrooduc.

Behind the shop were stables as deliveries were made by horse and cart. The shop front of plate glass windows was surrounded by tiles on which 'Male' was moulded. The sign 'Butcher' painted originally on the external brick wall can still be seen in the adjacent shop (No. 41).

The adjoining building (No 43) was added in 1934 by Tom Male to enable his friend Alf Sexton to continue his hairdressing business. It has continued to operate for more than 70 years, making it the oldest continuing retail business in Mornington.



THE PREMIER BUTCHER

J. W. DOHERTY

MAIN STREET

SUPPLIES BEST BEEF, MUTTON and PORK

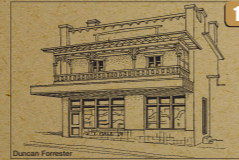
PRIME POULTRY Always on Hand

SMALL GOODS Fresh Daily

ICE CHAMBERS ON PREMISES

Telephone No. 6

ORDERS BY POST RECEIVE EVERY ATTENTION



Duncan Forsythe
MALES BUTCHERY AND THE HAIRDRESSERS

39 Main Street

Built in the late 1800s, this was one of several butchers shops in the town. First occupied by James Smith Adams, it was purchased by Tom Male in 1918. The Male family owned the business for over 30 years. They had a slaughter-yard in Bentons Rd, Moorooduc.

Behind the shop were stables as deliveries were made by horse and cart. The shop front of plate glass windows was surrounded by tiles on which 'Male' was moulded. The sign 'Butcher' painted originally on the external brick wall can still be seen in the adjacent shop (No. 41).

The adjoining building (No.43) was added in 1934 by Tom Male to enable his friend Alf Sexton to continue his hairdressing business. It has continued to operate for

more than 70 years, making it the oldest continuing retail business in Mornington.

PREMIER BUTCHERY.
Mornington Meat Supply.
T. MALE, Junr.
BUTCHER, Main Street, Mornington.

PREMIER BUTCHERY.
Mornington Meat Supply.
T. MALE, Junr. 
BUTCHER, Main Street, Mornington.
HAVING PURCHASED the above old-established business and goodwill from Mr. F. C. DOHERTY begs to notify that he has secured the services of a competent staff, and hopes to meet the requirements of the trade satisfactorily in every detail. SUPPLY CARTS TO MOOROODUC and SOMERVILLE, on the usual regular service.
Prime Beef and Best Mutton at Moderate Rates
Prices Reduced To Suit the Times.
Families Waited On Regularly For Orders.

Main St Mornington

14 COTTAGE/BILLIARD ROOM/
SHOPS

37 Main Street

This cottage is the last remnant of its type and was used as both a business and a residence.

For many years All Sexton ran his hairdressers here before moving next door to Males Butcher shop. The building at the rear was a billiard room.

The shops (Nos 27-35) in this section of Main Street were built in the late 1920s and early 1930s. Some still have period fixtures such as ornate chandeliers, remains of pressed metal ceilings, stained glass features, and wooden floors.

If you turn left into Queen Street, you will reach St. Peter's Church which was built in 1861. Inside there are some lovely stained glass windows dedicated to Mornington people and families. Returning to Main Street...



Former Hairdressing Salon and Tobacco's Shop
J. E. Lomax
Hairdresser
114 Main Street
Mornington
1920s
Photo: Mornington and Cape
Archives
Aerial photograph of the site
1930s



Former Billiard room



St. Peter's Church
Queen Street

Mornington Chamber of Commerce



The billiard room at the rear of the cottage

Main St Mornington

14 COTTAGE/BILLIARD ROOM/
SHOPS

37 Main Street

This cottage is the last remnant of its type and was used as both a business and a residence.

For many years All Sexton ran his hairdressers here before moving next door to Males Butcher shop. The building at the rear was a billiard room.

The shops (Nos 27-35) in this section of Main Street were built in the late 1920s and early 1930s. Some still have period fixtures such as ornate chandeliers, remnants of pressed metal ceilings, stained glass features, and wooden floors.

If you turn left into Queen Street, you will reach St. Peter's Church which was built in 1861. Inside there are some lovely stained glass windows dedicated to Mornington people and families. Returning to Main Street...



Premier Hairdressing Saloon and Tobacconist's Shop.
J. E. Lomax
[LATE OF MALVERN]
114 Main Street, Mornington, Vic.
Telephone 114
A. SEXTON, Proprietor.
Open 10.00 AM to 6.00 PM
Sundays 11.00 AM to 5.00 PM



Former Billiard room



St. Peter's Church
Queen Street

Mornington Chamber of Commerce

Premier Hairdressing Saloon
and Tobacconist's Shop.
Main Street, Mornington.

J. E. Lomax

[Late of Malvern]

HAS pleasure in announcing that he has purchased the business so long and successfully carried on by Mr. J. N. Groves.

A First-class Stock of Toilet Requisites to select from.

THE HAIRDRESSING SALOON is under the supervision of MR. A. SEXTON (late A.I.F.) formerly of Lewin's, City.

Pipes, Tobaccos and Cigars.

A New Shipment of Barling Pipes just to hand at City prices.

Main St Mornington

14 COTTAGE/BILLIARD ROOM/
SHOPS

37 Main Street

This cottage is the last remnant of its type and was used as both a business and a residence.

For many years All Sexton ran his hairdressers here before moving next door to Males Butcher shop. The building at the rear was a billiard room.

The shops (Nos. 27-35) in this section of Main Street were built in the late 1920s and early 1930s. Some still have period fixtures such as ornate ceilings, remains of pressed metal ceilings, stained glass features, and wooden floors.

If you turn left into Queen Street, you will reach St. Peter's Church which was built in 1861. Inside there are some lovely stained glass windows dedicated to Mornington people and families. Returning to Main Street...



Former Hairdressing Salon and Tobacco's Shop
J. E. Lomax
114 Main Street, Mornington
1928-1930. Architect: J. E. Lomax.
The building was designed by J. E. Lomax and built by J. E. Lomax.
The building was designed by J. E. Lomax and built by J. E. Lomax.



Former Billiard room



St. Peter's Church
Queen Street

Mornington Chamber of Commerce



One of the friezes in these 1930s shops

Main St Mornington

14 COTTAGE/BILLIARD ROOM/
SHOPS

37 Main Street

This cottage is the last remnant of its type and was used as both a business and a residence.

For many years All Sexton ran his hairdressers here before moving next door to Males Butcher shop. The building at the rear was a billiard room.

The shops (Nos 27-35) in this section of Main Street were built in the late 1920s and early 1930s. Some still have period fixtures such as ornate chandeliers, remains of pressed metal ceilings, stained glass features, and wooden floors.

If you turn left into Queen Street, you will reach St. Peter's Church which was built in 1861. Inside there are some lovely stained glass windows dedicated to Mornington people and families. Returning to Main Street...



Former Hairdressing Salon and Tobacco's Shop

J. E. Lomax

114 Main Street, Mornington
1928-1935
J. E. Lomax
114 Main Street, Mornington
1928-1935



Former Billiard room



St. Peter's Church
Queen Street

Mornington Chamber of Commerce

J. T. SANDERS PHARMACEUTICAL CHEMIST

All the Requirements of a First-class Pharmacy

A Choice Selection of
HOLIDAY REQUISITES, BRUSHES, COMBS, SOAPS,
PERFUMES, Etc., BATHING CAPS,
FLOATS, SPONGES, Etc.

Try our SODA FOUNTAIN DRINKS
Prepared from Fresh Fruits—Wholesome and Pure

THE PHARMACY, MORNINGTON

Main St Mornington

14 COTTAGE/BILLIARD ROOM/
SHOPS

37 Main Street

This cottage is the last remnant of its type and was used as both a business and a residence.

For many years All Sexton ran his hairdressers here before moving next door to Males Butcher shop. The building at the rear was a billiard room.

The shops (Nos 27-35) in this section of Main Street were built in the late 1920s and early 1930s. Some still have period fixtures such as ornate ceilings, remains of pressed metal ceilings, stained glass features, and wooden floors.

If you turn left into Queen Street, you will reach St. Peter's Church which was built in 1861. Inside there are some lovely stained glass windows dedicated to Mornington people and families. Returning to Main Street...



Former Hairdressing Salon and Tobacco's Shop
J. E. Lomax
Hair Dresser
114 Main Street
Mornington
Phone: 4444
J. E. Lomax
Hair Dresser
114 Main Street
Mornington
Phone: 4444

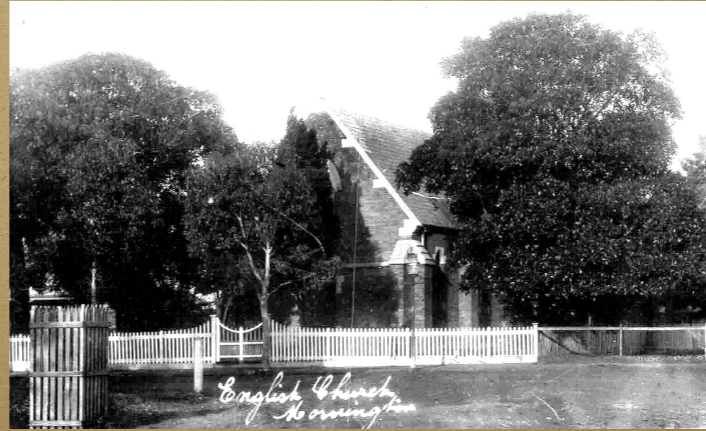


Former Billiard room



St. Peter's Church
Queen Street

Mornington Chamber of Commerce



St. Peter's Church, also the 'English Church'



MECHANIC'S INSTITUTE & RSL CLUB

Corner of Queen and Main Streets

Designed by Thomas Watts & Sons, The Mechanics Institute building was funded from public subscriptions and opened New Year's Eve 1885. It comprised a large hall for up to 300 people, a reading room and a library.

For over 70 years the Mechanics Hall, as it was popularly called, was the cultural and entertainment centre for the Mornington community, where public meetings, concerts, theatricals and dances took place. It was also the town's picture theatre for many years until The Plaza was opened in the 1930s. In 1922 it was turned into the Shire Offices and only the facade remains.

The adjacent Mornington Memorial building was built in 1922 for the local branch of the Returned Soldiers League with money raised from the public in memory of those who had fallen in the First World War.



You will notice the Westminster Bollard. The bollard was originally located at the top of the steps which led down to the River Thames from Millbank Prison, from where convicts would start their transportation to Australia. This was presented to the Mornington Shire to commemorate its centenary in 1933 by the City of Westminster, London.

It should be noted that Victoria and Mornington were settled by free citizens.



c.1910



MECHANIC'S INSTITUTE & RSL CLUB

Corner of Queen and Main Streets

Designed by Thomas Watts & Sons, The Mechanics Institute building was funded from public subscriptions and opened New Year's Eve 1885. It comprised a large hall for up to 300 people, a reading room and a library.

For over 70 years the Mechanics Hall, as it was popularly called, was the cultural and entertainment centre for the Mornington community, where public meetings, concerts, theatricals and dances took place. It was also the town's picture theatre for many years until The Plaza was opened in the 1930s. In 1922 it was turned into the Ship Offices and only the facade remains.

The adjacent Mornington Memorial building was built in 1922 for the local branch of the Returned Soldiers League with money raised from the public in memory of those who had fallen in the First World War.



You will notice the Westminster Bollard. The bollard was originally located at the top of the steps which led down to the River Thames from Millbank Prison, from where convicts would start their transportation to Australia. This was presented to the Mornington Shire to commemorate its centenary in 1933 by the City of Westminster, London.

It should be noted that Victoria and Mornington were settled by free citizens.

Peoples' Pictures Mechanics Mornington

TO-NIGHT (FRIDAY)—"Sally of the Sawdust" (Carol Deister). **A Great Circus Film.** SEE THIS

TO-MORROW (SATURDAY)—"The Limited Mail" (Mabel Blue) and "Fair Play" (Betty Francisco)

MONDAY NEXT—"Along Came Ruth" (Viola Dana) : "Married Flirts" (Pauline Frederick)

WEDNESDAY NEXT—"The Sporting Lover" (Barbara Bedford) and "The Half Way Girl" (Doris Kenyon)

Gazette and Comedy Films. Booking at Mr. Edwards, Chemist. No extra charge.

Admission : Adults 2/ and 1/3 Children 1/ and 9d.

Rankini's advert

Main St Mornington

16



Federal House c1914

FEDERAL HOUSE

13 Main Street

Built in the late 1880s, the Federal Cash Store was run for many years by Robert Nunn, selling groceries, wines and spirits. The building also included a bakery. There was a residence above with a fine wrought iron verandah. Robert Nunn was a highly-regarded businessman who became Shire President. Subsequently the store was converted into a guest house to meet the burgeoning holiday trade. In the early 1940s, it was advertised as a boarding house but also catered for weddings and offered meals. Bungalows were added in the back garden and the lounge on the first floor was also used as a meeting room. In 1940 as New Federal House it still maintained its original facade. In the 1950s it became The Federal Cafe.



The Federal Cash Stores
WINE, SPIRITS, GROCERIES
ALL THE LATEST BRANDS. SPECIAL DELIVERY BY MOTOR. TRADE WHOLESALE OFFERS.

GROCERIES and PROVISIONS
THE NEW FEDERAL HOUSE
13 MAIN STREET, MORNINGTON
GIVE US A TRY.

J. W. MOUL, Proprietor

Mornington Chamber of Commerce



Operated by Nunns c.1914

Federal House c1914



FEDERAL HOUSE

13 Main Street

Built in the late 1880s, the Federal Cash Store was run for many years by Robert Nunn, selling groceries, wines and spirits. The building also included a bakery. There was a residence above with a fine wrought iron verandah. Robert Nunn was a highly-regarded businessman who became Shire President. Subsequently the store was converted into a guest house to meet the burgeoning holiday trade.

In the early 1940s, it was advertised as a boarding house but also catered for weddings and offered meals. Bungalows were added in the back garden and the lounge on the first floor was also used as a meeting room. In 1949 as New Federal House it

still maintained its original facade. In the 1950s it became The Federal Cafe.



The Federal Cash Stores
MAIN STREET, MORNINGTON
IS THE RIGHT PLACE TO BUY YOUR
WINES and SPIRITS
All the Leading Brands Stocked. See our Windows for
SPECIAL XMAS WINE OFFER

GROCERIES and PROVISIONS
This being a CASH BUSINESS we can
supply all lines at lowest possible prices.

GIVE US A TRIAL **J. W. HIGGS, Proprietor**

The Federal Cash Stores

MAIN STREET, MORNINGTON

IS THE RIGHT PLACE TO BUY YOUR

WINES and SPIRITS

All the Leading Brands Stocked. See our Windows for
SPECIAL XMAS WINE OFFER

GROCERIES and PROVISIONS

This being a CASH BUSINESS we can
supply all lines at lowest possible prices.

GIVE US A TRIAL **J. W. HIGGS, Proprietor**

Main St Mornington

16



Federal House c1914

FEDERAL HOUSE

13 Main Street

Built in the late 1880s, the Federal Cash Store was run for many years by Robert Nunn, selling groceries, wines and spirits. The building also included a bakery. There was a residence above with a fine wrought iron verandah. Robert Nunn was a highly-regarded businessman who became Shire President. Subsequently the store was converted into a guest house to meet the burgeoning holiday trade.

In the early 1940s, it was advertised as a boarding house but also catered for weddings and offered meals. Bungalows were added in the back garden and the lounge on the first floor was also used as a meeting room. In 1940 as New Federal House it still maintained its original facade. In the 1950s it became The Federal Cafe.



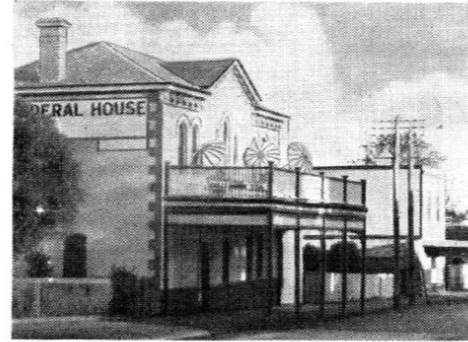
The Federal Cash Stores
WINE AND SPIRITS
GROCERIES AND PROVISIONS

Mornington Chamber of Commerce

Just as **MORNINGTON** is Victoria's Choice for SEASIDE HOLIDAYS—so the

“New Federal”

is Visitors' Choice for Comfort in Accommodation



Excellent Meals - Bright and Cosy Lounge and Sun Balcony - Lovely Lawns - 1 Minute to Beautiful Beaches - Sight-seeing Tours and Fishing Arranged

**TARIFF: Ordinary £4/4/- Children under 12 £2/2/-
Xmas & Easter Fortn't £5/5/- " " " £3/3/-**

Book through **VIC. GOVT. TOURIST BUREAU** or Phone Direct—Mornington 268 Under Personal Supervision of Prop. **E. ALLAN BEST**

Federal House c1914



FEDERAL HOUSE

13 Main Street

Built in the late 1880s, the Federal Cash Store was run for many years by Robert Nunn, selling groceries, wines and spirits. The building also included a bakery. There was a residence above with a fine wrought iron veranda. Robert Nunn was a highly-regarded businessman who became Shire President. Subsequently the store was converted into a guest house to meet the burgeoning holiday trade.

In the early 1940s, it was advertised as a boarding house but also catered for weddings and offered meals. Bungalows were added in the back garden and the lounge on the first floor was also used as a meeting room. In 1940 as New Federal House it still maintained its original facade. In the 1950s it became The Federal Cafe.



The Federal Cash Stores
WINE AND SPIRITS
GROCERIES and PROVISIONS

The Federal Mornington

**Guest House for Visitors
and Travellers.**

Three minutes' walk from Beach and Train. Near
Bowling Green. Adjoining Tennis Court. Electric
Light. Beautiful Beaches. Walks and Drives.

**Good Fishing and Shooting.
Every Comfort and Attention.
Own Bathing Boxes. Garage.
Hot and Cold Water.**

IDEAL WINTER CLIMATE.

TARIFF—

**Holidays and January : £3/3/- per week
Other Periods : On application**

Mrs. M. A. LAURIE - - Proprietress
Telephone: Mornington **268**

Heritage Walk



17

OLD POST OFFICE

Corner of Main Street and Esplanade

Designed by William Wardell in Palladian Italian Renaissance style in polychrome brick and now covered with a cement render, it was built in 1863/4. Originally this fine building had a gabled entry porch and small verandah on its west-facing wall. Inside is the original expansive wooden counter and fireplace and other fittings.

The building replaced the original telegraph office which had been opened in 1861. The mail arrived from Melbourne by boat and was brought up from the pier by horse and cart to be sorted. Mornington's first telephone exchange opened in this building in 1905.

The Post Office was transferred to new premises in 1963/64. This building was reopened in 1968 as a museum, exhibiting many objects tracing the history of the Mornington district as well as postal and communications memorabilia.



Posted in 1867 from Schaeffer Post (Mornington, Victoria)



c.1910



Post Office Mornington, 1910

OLD POST OFFICE

Corner of Main Street and Esplanade

Designed by William Wardell in Palladian Italian Renaissance style in polychrome brick and now covered with a cement render, it was built in 1863/4. Originally this fine building had a gabled entry porch and small verandah on its west-facing wall. Inside is the original expansive wooden counter and fireplace and other fittings.

The building replaced the original telegraph office which had been opened in 1861. The rail arrived from Melbourne by boat and was brought up from the pier by horse and cart to be sorted. Mornington's first telephone exchange opened in this building in 1905.

The Post Office was transferred to new premises in 1963/64. This building was reopened in 1968 as a museum, exhibiting many objects tracing the history of the Mornington district as well as postal and communications memorabilia.



Posted in 1867 from Schaeffer Post (Mornington, Victoria)

Mornington & District Historical Society



Cobb & Co Coach



Post Office Mornington, 1910

OLD POST OFFICE

Corner of Main Street and Esplanade

Designed by William Wardell in Palladian Italian Renaissance style in polychrome brick and now covered with a cement render, it was built in 1863/4. Originally this fine building had a gabled entry porch and small verandah on its west-facing wall. Inside is the original expansive wooden counter and fireplace and other fittings.

The building replaced the original telegraph office which had been opened in 1861. The rail arrived from Melbourne by boat and was brought up from the pier by horse and cart to be sorted. Mornington's first telephone exchange opened in this building in 1905.

The Post Office was transferred to new premises in 1963/64. This building was reopened in 1968

as a museum, exhibiting many objects tracing the history of the Mornington district as well as postal and communications memorabilia.



Posted in 1867 from Schaeffer Post (Mornington, Victoria)



Telegram 1870s



Post Office Mornington, 1910

OLD POST OFFICE

Corner of Main Street and Esplanade

Designed by William Wardell in Palladian Italian Renaissance style in polychrome brick and now covered with a cement render, it was built in 1863/4. Originally this fine building had a gabled entry porch and small verandah on its west-facing wall. Inside is the original expansive wooden counter and fireplace and other fittings.

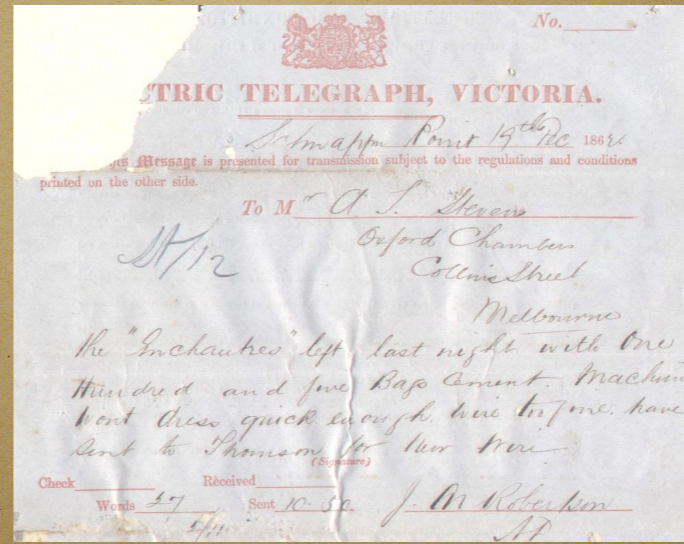
The building replaced the original telegraph office which had been opened in 1861. The mail arrived from Melbourne by boat and was brought up from the pier by horse and cart to be sorted. Mornington's first telephone exchange opened in this building in 1905.

The Post Office was transferred to new premises in 1963/64. This building was reopened in 1968 as a museum, exhibiting many objects tracing the history of the Mornington district as well as postal and communications memorabilia.



Posted in 1867 from Schapper Post (Mornington), Victoria

Mornington & District Historical Society



Telegram 1862

Heritage Walk

17



Post Office Mornington, 1910

OLD POST OFFICE

Corner of Main Street and Esplanade

Designed by William Wardell in Palladian Italian Renaissance style in polychrome brick and now covered with a cement render, it was built in 1863/4. Originally this fine building had a gabled entry porch and small verandah on its west-facing wall. Inside is the original expansive wooden counter and fireplace and other fittings.

The building replaced the original telegraph office which had been opened in 1861. This room arrived from Melbourne by boat and was brought up from the pier by horse and cart to be sorted. Mornington's first telephone exchange opened in this building in 1905.

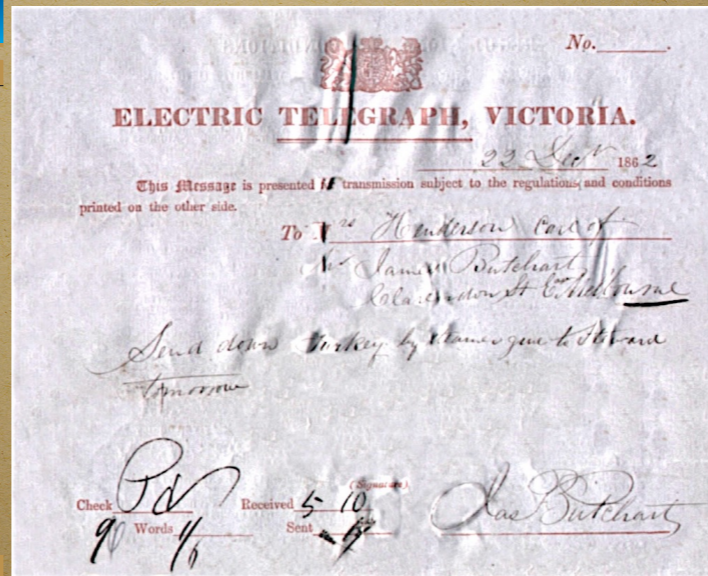
The Post Office was transferred to new premises in 1963/64. This building was reopened in 1968

as a museum, exhibiting many objects tracing the history of the Mornington district as well as postal and communications memorabilia.



Posted in 1867 from Schapper Post (Mornington, Victoria)

Mornington & District Historical Society



Telegram from Butchart of Beleura 1862



STATE SAVINGS BANK

787 Esplanade

The bank and residence was built by J.C. Caldwell in Swiss chalet style and completed in 1912. Electric lighting was installed in 1923.

The State Savings Bank was known as "The Farmers Bank" as it became a key source of farm finance, which was important for the largely rural community of the Peninsula. In 1954 the Bank moved to new premises in Main Street. It has been occupied by a variety of businesses including the first offices of the Mornington Crime Investigation Unit in 1977.

Much of the original interior is preserved, including the pressed metal ceilings and the old fireplaces.

State Savings Bank of Victoria

THE FARMERS' BANK!

<p>Special Terms for Home Loans, Overseas, and Overseas and Domestic Workers</p> <p>Special Terms for Home Loans, Overseas, and Overseas and Domestic Workers</p> <p>Special Terms for Home Loans, Overseas, and Overseas and Domestic Workers</p>	<p>Special Terms for Home Loans, Overseas, and Overseas and Domestic Workers</p> <p>Special Terms for Home Loans, Overseas, and Overseas and Domestic Workers</p> <p>Special Terms for Home Loans, Overseas, and Overseas and Domestic Workers</p>
--	--

Application Form at any "State Savings" Bank

Head Office, Melbourne, Victoria

GEO. E. EMERY, Inspector-General

Mornington Chamber of Commerce

The State Savings Bank of Victoria

ESTABLISHED 1841

Guaranteed by the Government of Victoria

There are now 718,281 Depositors with over Twenty-three million pounds to their credit.

Branches at Mornington (The Esplanade), Frankston, Cheltenham, and 120 other centres, with 333 Agencies at smaller towns.

Deposits received from one shilling to one thousand pounds.

Interest allowed on sums from £1 to £350 as follows:

3½ per cent. on sums up to	... £100
3 per cent. on excess over	£100 up to £350

Depositors may also purchase Deposit Stock, bearing interest at 3 per cent. in sums from £10 to £1000, in addition to having an ordinary account bearing interest up to £350.

A SAFE DEPOSIT DEPARTMENT

for the exclusive use of Depositors, is now established at Head Office and Branches.

Locked boxes and sealed packets containing deeds, wills, and other valuable documents may be lodged for safe keeping on production of passbook and payment of a small annual fee.

Head Office,
Elizabeth Street, Melbourne.

GEO. E. EMERY,
Inspector-General.

Main St Mornington

18



Duncan Forrester

STATE SAVINGS BANK

787 Esplanade

The bank and residence was built by J.C. Caldwell in Swiss chalet style and completed in 1912. Electric lighting was installed in 1923.

The State Savings Bank was known as "The Farmers Bank" as it became a key source of farm finance, which was important for the largely rural community of the Peninsula. In 1954 the Bank moved to new premises in Main Street. It has been occupied by a variety of businesses including the first offices of the Mornington Crime Investigation Unit in 1977.

Much of the original interior is preserved, including the pressed metal ceilings and the old fireplaces.

State Savings Bank of Victoria

THE FARMERS' BANK!

<p>CHARGE REPAY LOAN ON FARM PROPERTIES.</p> <p>THEY TAKE UP OF VOLUMES UP TO £2,000 AT 5 PER CENT.</p> <p>REPAYABLE OVER 25 YEARS, WITH 15% BALANCE FOR EACH YEAR.</p> <p>APPLICATION INVOLVING AN EXPERT SURVEYING PARTY.</p> <p>HEAD OFFICE: 100, MARKET STREET, MELBOURNE.</p>	<p>SPECIAL TERMS FOR RURAL BANKERS, DISTRICTS, AND OTHERS AND TRAVELLING WORKERS.</p> <p>THREE MONTHS OF VOUCHERS UP TO £2,000 AT 3% PER ANNUM.</p> <p>REPAYABLE OVER 20 YEARS, WITH 15% BALANCE FOR EACH YEAR.</p> <p>APPLY TO ANY BRANCH OF THE STATE SAVINGS BANK.</p> <p>1912-13.</p>
--	---

Mornington Chamber of Commerce



Esplanade guest house and hotels



Duncan Forrester

STATE SAVINGS BANK

787 Esplanade

The bank and residence was built by J.C. Caldwell in Swiss chalet style and completed in 1912. Electric lighting was installed in 1923.

The State Savings Bank was known as "The Farmers Bank" as it became a key source of farm finance, which was important for the largely rural community of the Peninsula. In 1954 the Bank moved to new premises in Main Street. It has been occupied by a variety of businesses including the first offices of the Mornington Crime Investigation Unit in 1977.

Much of the original interior is preserved, including the pressed metal ceilings and the old fireplaces.

State Savings Bank of Victoria

THE FARMERS' BANK!

<p>Special Loans on Farm Properties.</p> <p>Two-thirds of Valuation up to £2,000 at 5 per cent.</p> <p>Repayable over 25 years, 2/6 the half-yearly for each £100.</p>	<p>Special Terms for Retired Soldiers, Overseas, and Colon and Transport Workers.</p> <p>Three-fourths of Valuation up to £2,000 at 3/6 per cent.</p> <p>Repayable over 20 years, 2/6 the half-yearly for each £100.</p>
--	--

Application closing at 5pm "After-Closing" Bank Hours on the 1st day of the month.

Head Office, Melbourne. 440/1, 440/2, 440/3, 440/4, 440/5, 440/6, 440/7, 440/8, 440/9, 440/10, 440/11, 440/12, 440/13, 440/14, 440/15, 440/16, 440/17, 440/18, 440/19, 440/20, 440/21, 440/22, 440/23, 440/24, 440/25, 440/26, 440/27, 440/28, 440/29, 440/30, 440/31, 440/32, 440/33, 440/34, 440/35, 440/36, 440/37, 440/38, 440/39, 440/40, 440/41, 440/42, 440/43, 440/44, 440/45, 440/46, 440/47, 440/48, 440/49, 440/50, 440/51, 440/52, 440/53, 440/54, 440/55, 440/56, 440/57, 440/58, 440/59, 440/60, 440/61, 440/62, 440/63, 440/64, 440/65, 440/66, 440/67, 440/68, 440/69, 440/70, 440/71, 440/72, 440/73, 440/74, 440/75, 440/76, 440/77, 440/78, 440/79, 440/80, 440/81, 440/82, 440/83, 440/84, 440/85, 440/86, 440/87, 440/88, 440/89, 440/90, 440/91, 440/92, 440/93, 440/94, 440/95, 440/96, 440/97, 440/98, 440/99, 440/100.

Royal Hotel, ESPLANADE Mornington.

(FACING THE SEA.)

TWO BILLIARD TABLES. LARGE LOFTY DINING-ROOM. ACCOMMODATE 100.

EXCELLENT CUISINE. TERMS ON APPLICATION.

Phone 3.

E. O'GORMAN,
Proprietress.

Other Notable Sights

Close to Main Street are the following buildings and monuments of historical significance which you might also like to visit:



Former St. Andrew's Presbyterian Church (1867)
Now a restaurant
cnr. Barkly St.
and Waterloo Place



Memorial Park
Commemorating those
who served in all wars,
cnr Barkly St. and Empire St.



The Toy Library
An old cottage,
Albert St.



The Vicarage (1863)
Now private property Cnr.
Ross St. and Drake St.



The Monument to the Football Disaster (1892)
Cnr. Esplanade and
Schnapper Point Drive



Morningson Park
With Avenue of Honour,
Matthew Flinders statue
and Band Pavilion

**The Audio Tour of Historic Main Street Mornington is supported
through funding from the Australian Government's 2013/14
Community Heritage Election Commitments**

The Mornington & District Historical Society would like to thank:

Mr. Bruce Billson MP
The Mornington Chamber of Commerce
Councillor Bev Colomb

Mrs. Val Wilson OAM
Mr. Michael Collins
Mrs. Janet Groves
Mr. Mick Taylor
Mrs. Diane White

Lavender Hill Multimedia
iSite Media
Banana Graphics Pty. Ltd.
Evan Stampe